

JGW-2F

PHOTOMOS RELAY



Features

- * Photo isolation
- * Dielectric strength:1500VAC,1min.
- * Insulation resistance:1000M Ω
- * Printed circuit board mount

INPUT (TA = 25°C)

Control Current range	5mA to 20mA
Reverse protection voltage	3V max.
Must release Current	0.4mA min.
Must operate Current	5mA max.

DESCRIPTION

JGW-2F solid state relay comes in a super-miniature DIP package measuring (L) 10.3x(W) 6.4x(H) 3.5mm³.Low on resistance (Max.50) at 400V for normally-closed type,controls low-level analog signals and low-level off state leakage current.

OUTPUT

Load voltage range (@ 47 to 63Hz)	50 to 264VAC	
Load current range	150mArms	
Max surge current (10ms)	0.3Apk	
Max turn-off time	0.5ms	
Max turn-on time	0.3ms	
Max leakage current	1 μ A max	
Turn on time	0.3ms	
Turn off time	0.5ms	
Transient overvoltage	400vpK max.	
On resistance	A mode ⁽¹⁾	50 Ω
	B mode ⁽¹⁾	25 Ω
	C mode ⁽¹⁾	12.5 Ω

APPLICATIONS

- * Telecommunications
- * Automatic meter reading
- * High speed inspection machines
- * Factory automation equipment

GENERAL

Dielectric strength (input to output)	1500VAC min.
Insulation resistance	1000M Ω , min. (at 500VDC)
Max. capacitance (input to output)	1.5pF
Vibration durability	10 to 55 Hz Double amplitude 3mm
Shock durability	500g
Operating	-20°C to +80°C
Storage	-40°C to +100°C
Ambient humidity	45% to 85%
Unit weight	0.6g max.

Notes(1):To see terminal arrangement internal connections.



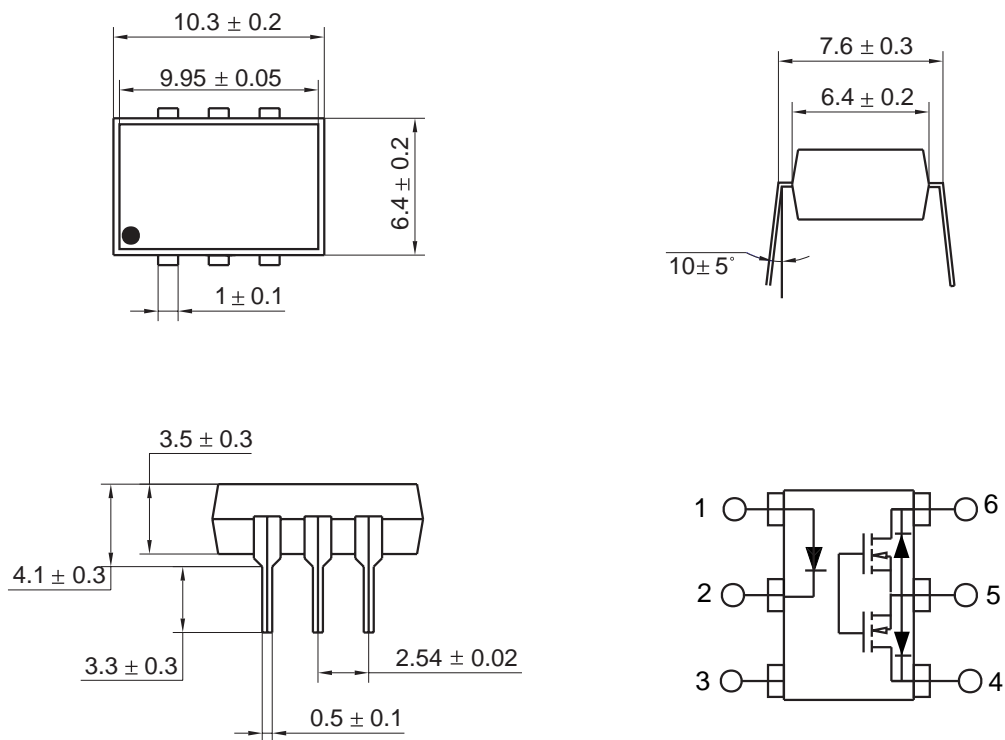
HONGFA RELAY
ISO9001/QS9000/ISO14000 CERTIFIED

VERSION: EN01-20020620

ORDERING INFORMATION

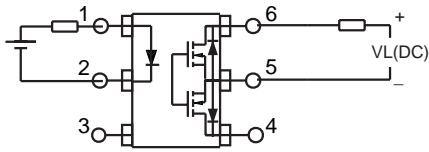
Type	JGW-2F /	A	2	1	2	D	N
Output Mode	A: Normal open(NO), B: Normal close(NC), C: Combination						
Feet	1: 4-PIN, 2: 6-PIN, 3: 8-PIN						
Level	1: Economy, 2: Radio frequency, 3: High sensitivity						
Load voltage(peak AC)	0: 60V, 1: 100V, 2: 200V, 3: 350V, 4: 400V						
Mount mode	D: DIP						
Isolation voltage	H: 5000V, N:1500V						

OUTLINE DIMENSIONS, WIRING DIAGRAM AND PC BOARD LAYOUT

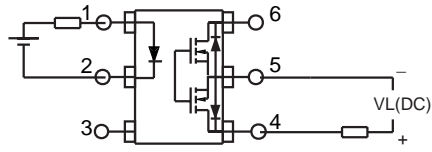


WIRING DIAGRAM

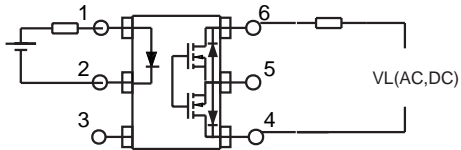
Wiring Diagram



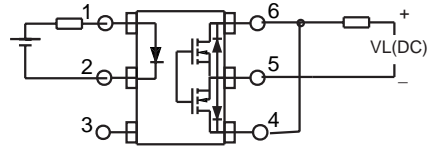
B Mode Wiring Diagram



B Mode Wiring Diagram



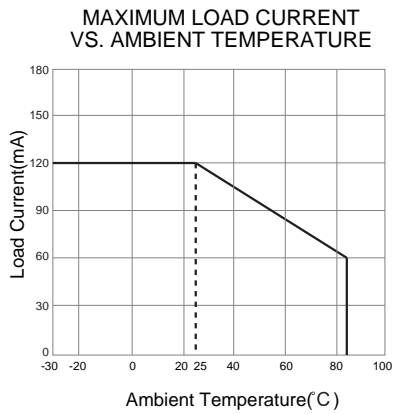
A Mode Wiring Diagram



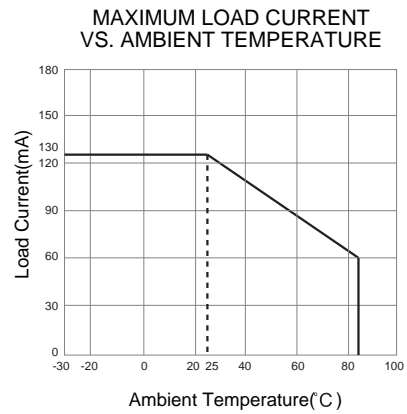
C Mode Wiring Diagram

CHARACTERISTICS CURVE

Wiring diagram A mode:



Wiring diagram B mode:



Wiring diagram C mode:

